

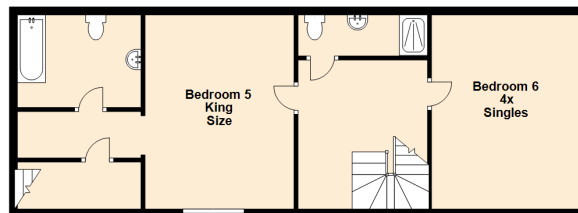
Ground Floor
Approx. 224.8 sq. metres (2419.8 sq. feet)



First Floor
Approx. 201.9 sq. metres (2172.8 sq. feet)



Second Floor
Approx. 67.2 sq. metres (723.6 sq. feet)



Total area: approx. 493.9 sq. metres (5316.3 sq. feet)